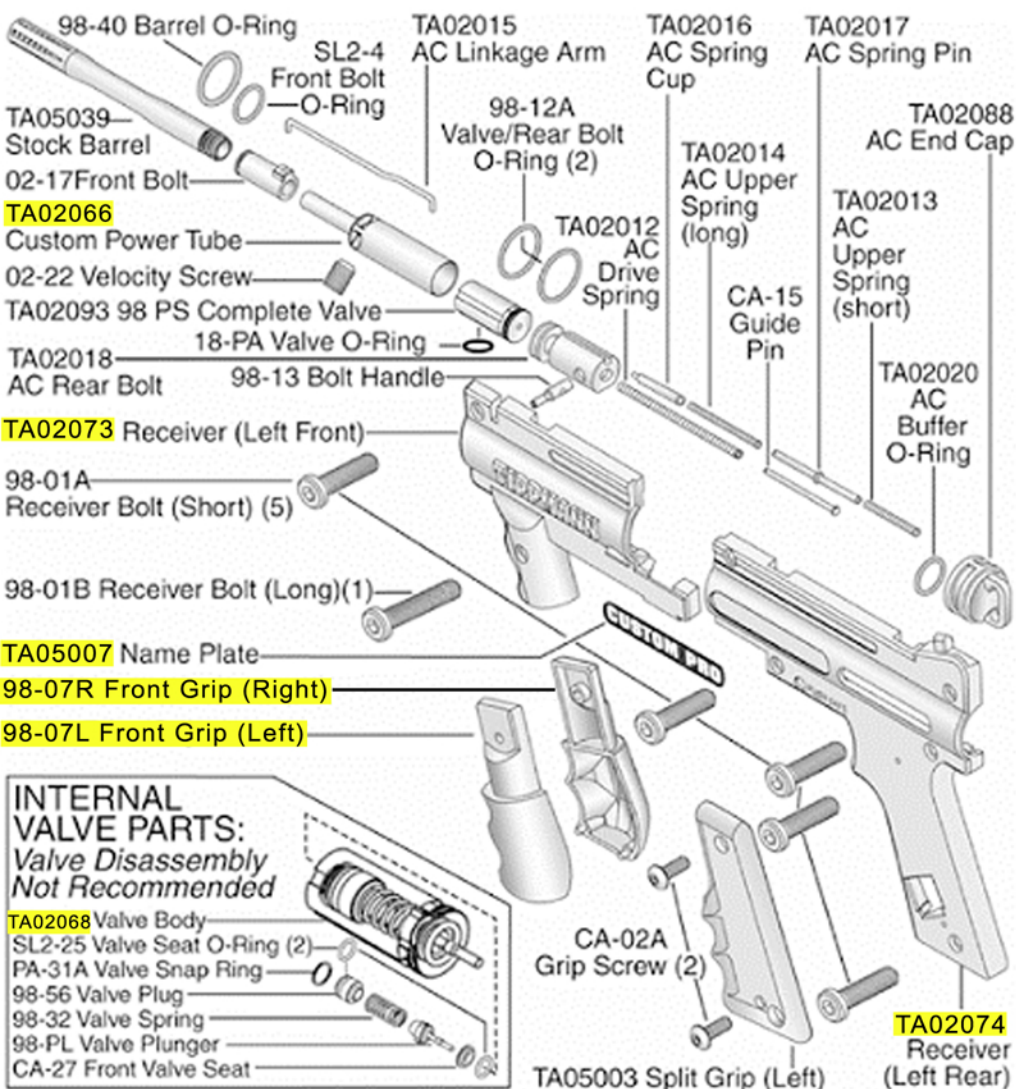


# TIPPMANN® 98 CUSTOM PLATINUM SERIES™ PRO™ PARTS LIST

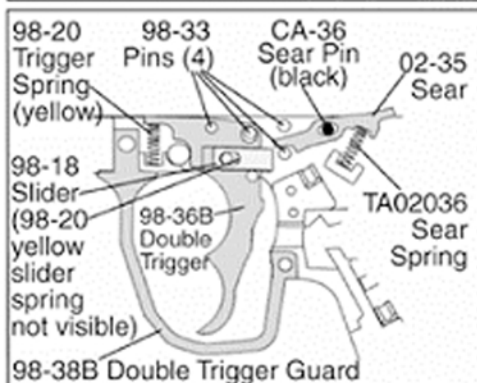


## INTERNAL VALVE PARTS: Valve Disassembly Not Recommended



## TRIGGER ASSEMBLY

- 1) Place 4 pins and 1 black sear pin into locations as shown.
- 2) Then place the trigger and sear onto pins as shown.
- 3) Insert sear spring as shown.
- 4) Insert trigger spring (yellow) as shown.



## WARNING

DO NOT DISASSEMBLE THIS MARKER WHILE IT IS PRESSURIZED WITH AIR. DO NOT PRESSURIZE A PARTIALLY ASSEMBLED MARKER.

Yellow = Diagram Correction  
Courtesy of TippmannParts.com

